

# SureStep<sup>®</sup> Stepping System Drives

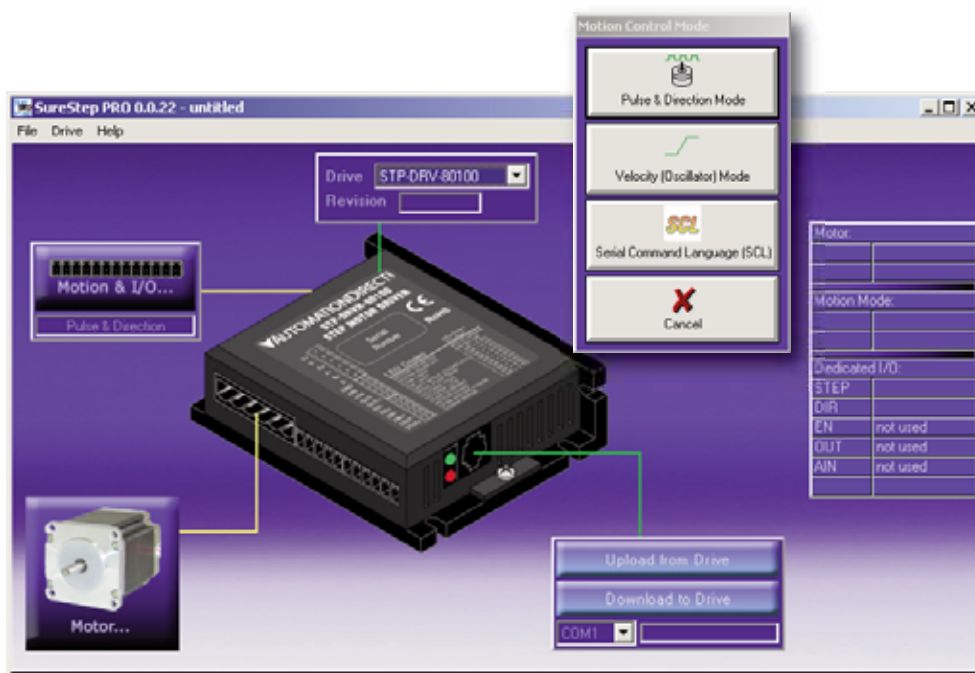
## SureStep<sup>®</sup> Microstepping Drives Accessories

### SureStep Pro Drive Configuration Software - for Advanced Stepper Drives

#### Free Download

SureStep Pro configuration software is available as a free download from our website for SureStep advanced drives (STP-DRV-4850 & -80100).

- Used for easy configuration and setup of the drive, including drive, motion control mode, I/O, motor.
- Serial command language for motor drive control via serial port; eliminates the need for separate motion controllers or indexers; provides easy interface to other industrial devices such as PCs, PLCs and HMIs.
- Easily use the ASCII output commands from most of our PLCs to enable indexing capability.
- Help files include technical data, application information, advanced setup, serial command instructions.
- Runs on 32-bit/64-bit Windows 7 and XP operating systems.



#### SureStep Drive Configuration Software - for Advanced Stepper Drives

Part Number	Price	Description
STP-PRO *	<-->	Windows-based configuration software for use with SureStep STP-DRV-4850 and STP-DRV-80100 advanced stepper drives. Requires Windows XP or Windows 7 (32 or 64-bit) operating system, minimum 12MB hard drive space, and RS-232 port (software also compatible with USB-RS232 adapter).
* Available for purchase on CD or can be downloaded for free from AutomationDirect Web site ( <a href="http://www.AutomationDirect.com">www.AutomationDirect.com</a> ).		